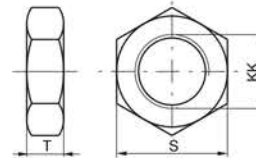
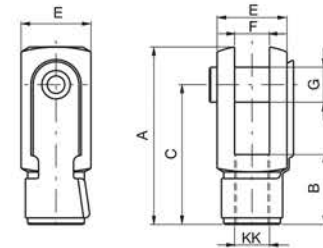
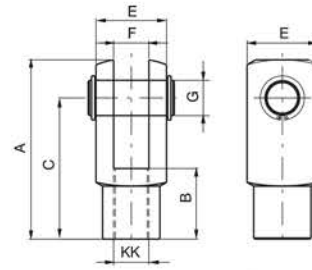


▶ Rod forks and nuts

Ordering code
1320.Ø.13F
1320.Ø.13/1F (from ø32 to ø100)
1320.Ø.18F



Bore		32	40	50	63	80	100	125	160	200	
A		52	62	83	83	105	105	148	188	188	
B		20	24	32	32	40	40	56	72	72	
C		40	48	64	64	80	80	110	144	144	
E		20	24	32	32	40	40	55	70	70	
F(B12)		10	12	16	16	20	20	30	35	35	
G		10	12	16	16	20	20	30	35	35	
S		17	19	24	24	30	30	41	55	55	
T		6	7	8	8	9	9	12	18	18	
KK		M10X1.25		M12X1.25	M16X1.5	M16X1.5	M20X1.5	M20X1.5	M27X2	M36X2	M36X2
Weight	forks	100	140	340	340	680	680	2500	4000	4000	
	nut	15	20	20	20	40	40	100	210	210	

Fork:
Element that when screwed to the rod consents a regular functioning even when there are significant lateral forces as the connection point. Made of zinc-plated steel.

Nut:
Used to block the position of the fork.